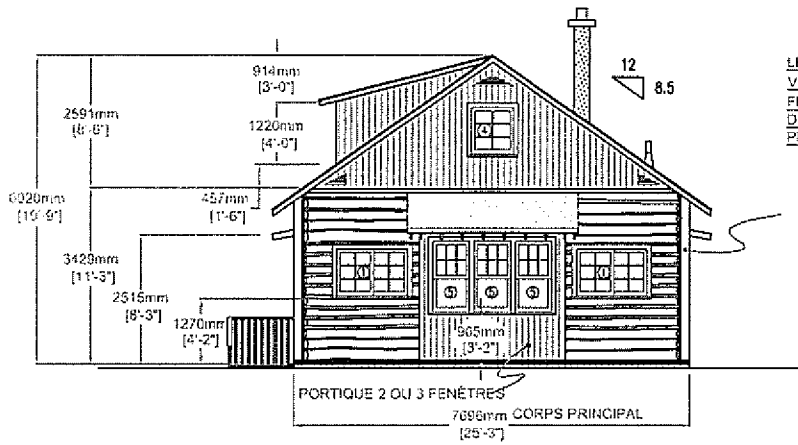


PLANCHE 1
MAISON TYPE A

LES CHIFFRES APPARAISSANT
VIS-A-VIS LES PORTES ET LES
FENÊTRES RÉFÉRENT AUX
DESSINS-TYPES FIGURANT SUR LA
PLANCHE 10

COIN STRUCTURAL EN 2" X 10"
ET 3/4" DE BILLE DE BOIS

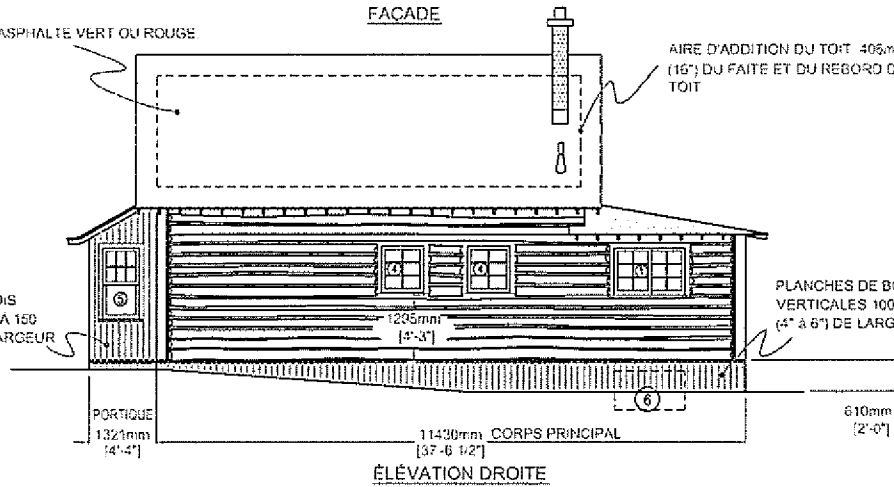


BARDEAUX D'ASPHALTE VERT OU ROUGE

AIRE D'ADDITION DU TOIT : 405mm
(16") DU FAÎTE ET DU REBORD DE
TOIT

PLANCHES DE BOIS
VERTICALES 100 A 150
mm (4" à 6") DE LARGEUR

PLANCHES DE BOIS
VERTICALES 100 A 150 mm
(4" à 6") DE LARGEUR

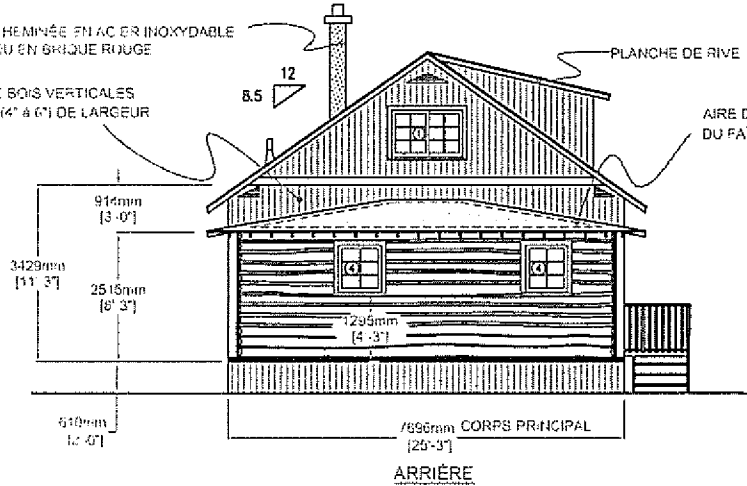


CHEMINÉE EN AC ER INOXYDABLE
OU EN BRIQUE ROUGE

PLANCHES DE BOIS VERTICALES
100 A 150 mm (4" à 6") DE LARGEUR

PLANCHE DE RIVE

AIRE D'ADDITION DU TOIT : 405mm (16")
DU FAÎTE ET DU REBORD DE TOIT



AIRE D'ADDITION DU TOIT : 405mm
(16") DU FAÎTE ET DU REBORD DE
TOIT

AIRE D'ADDITION DU TOIT : 405mm
(16") DU FAÎTE ET DU REBORD DE
TOIT

BARDEAUX D'ASPHALTE 3 PATTES
VERT OU ROUGE SELON LA CHARTE
DE COULEUR

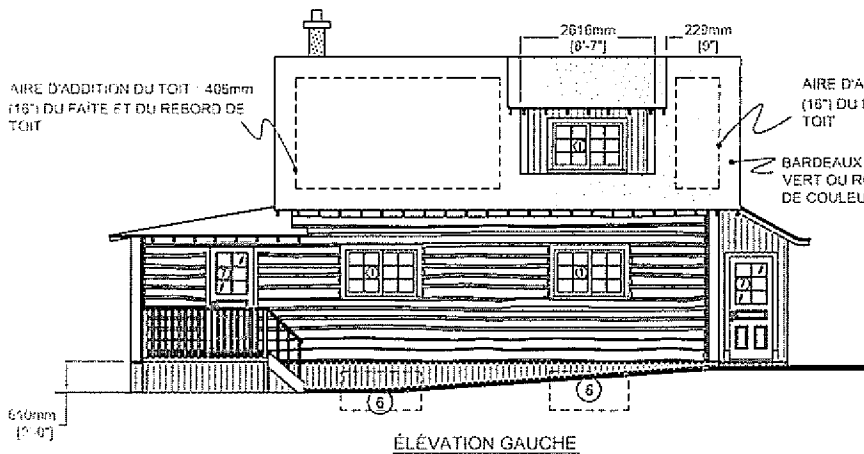


PLANCHE 2
MAISON TYPE A'
inversé

LES CHIFFRES APPARAISSANT VIS-À-VIS
LES PORTES ET LES FENÊTRES
RÉFÉRENT AUX DESSINS-TYPES
FIGURANT SUR LA PLANCHE 10.

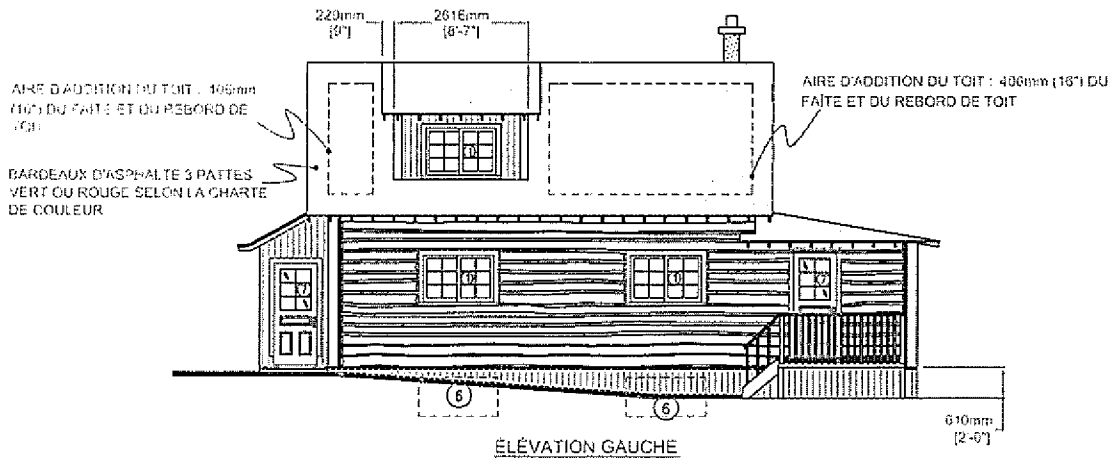
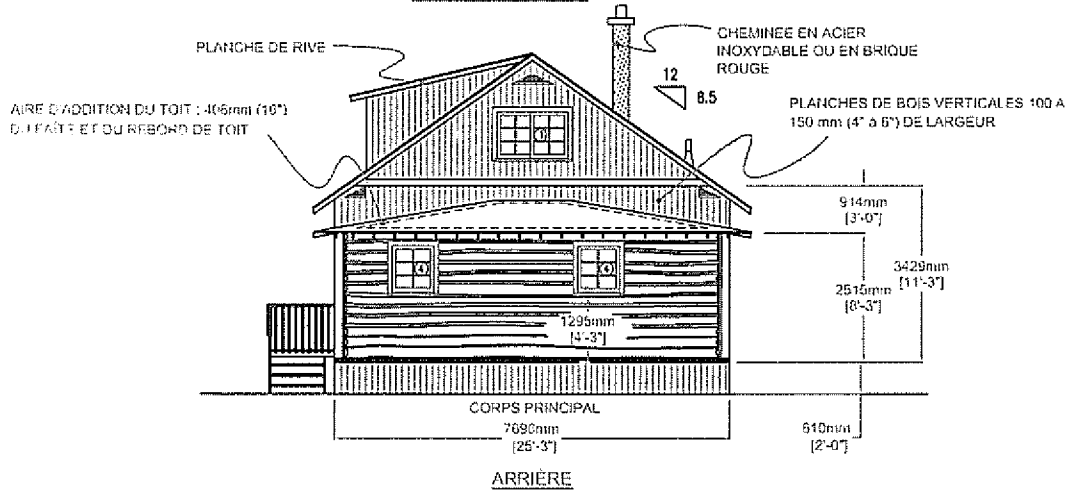
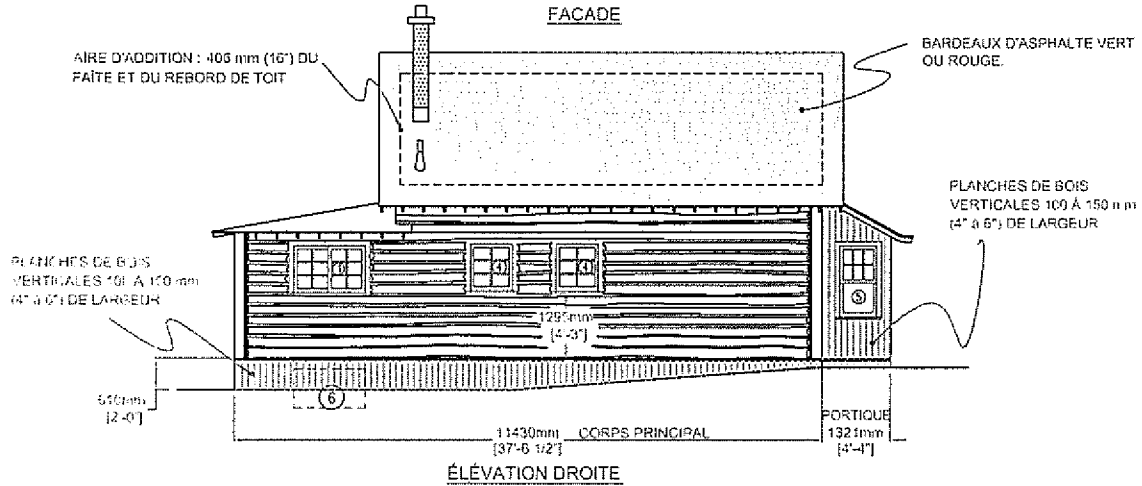
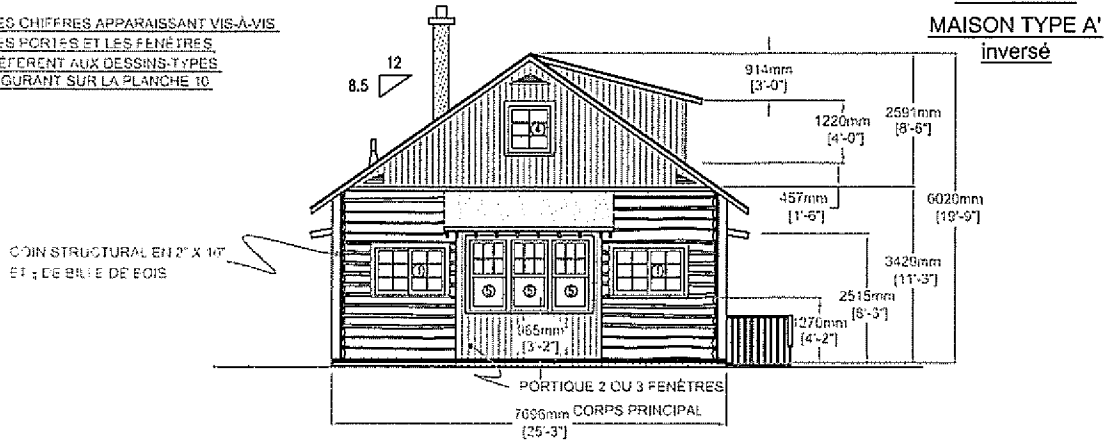
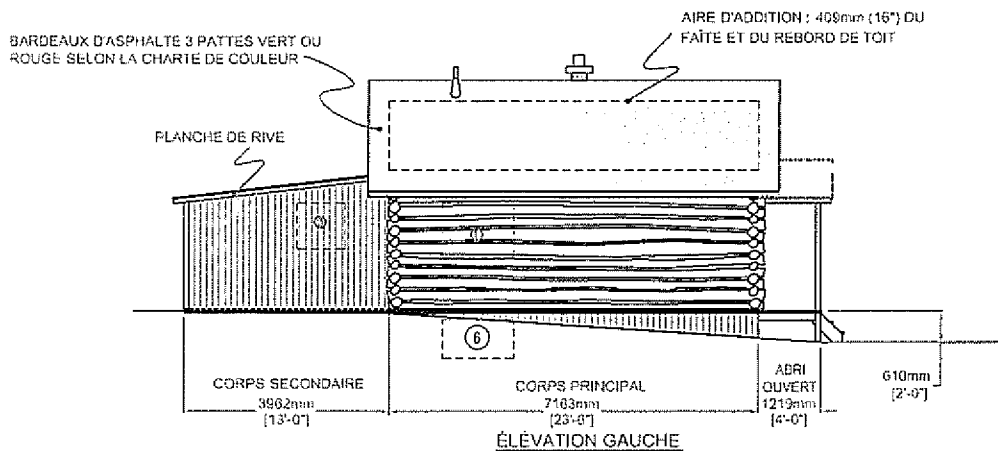
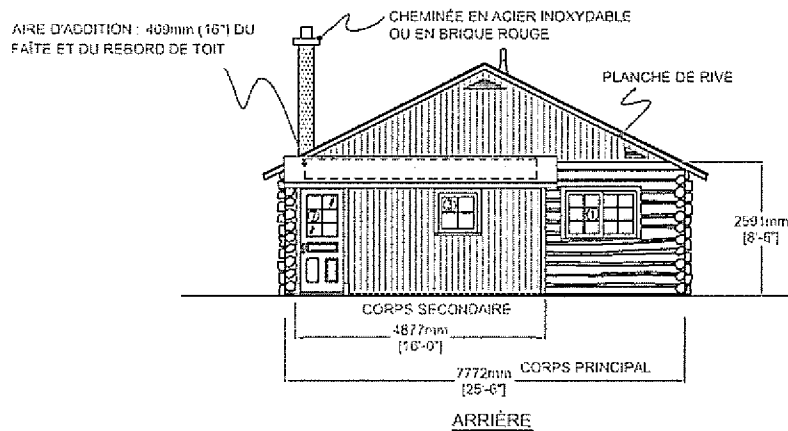
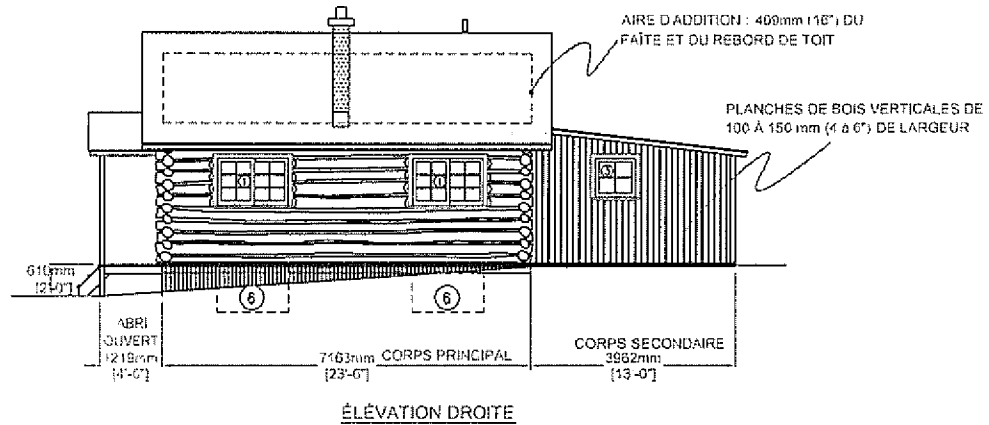
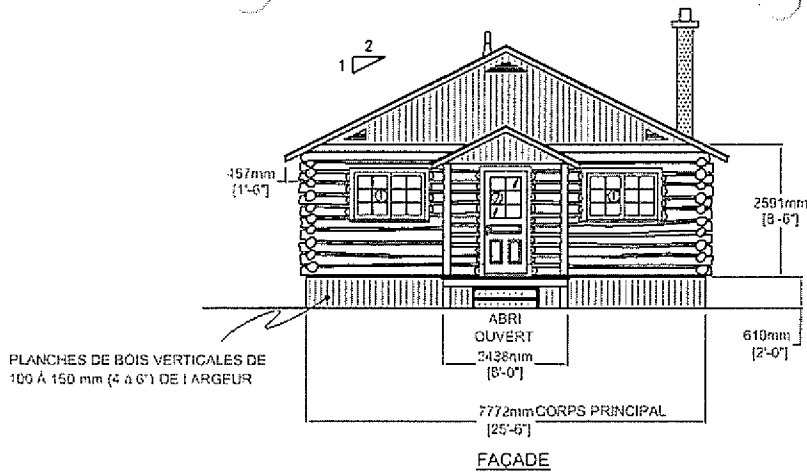
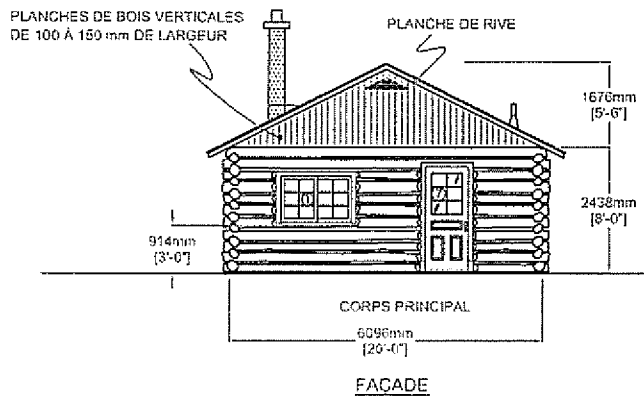


PLANCHE 3
MAISON TYPE B

LES CHIFFRES APPARAISSANT
VIS-À-VIS LES PORTES ET LES
FENÊTRES RÉFÈRENT AUX
DESSINS-TYPES FIGURANT SUR LA
PLANCHE 10



**PLANCHE 4
MAISON TYPE C**



LES CHIFFRES APPARAISSANT VIS-À-VIS LES PORTES ET LES FENÊTRES RÉFÈRENT AUX DESSINS-TYPES FIGURANT SUR LA PLANCHE 10

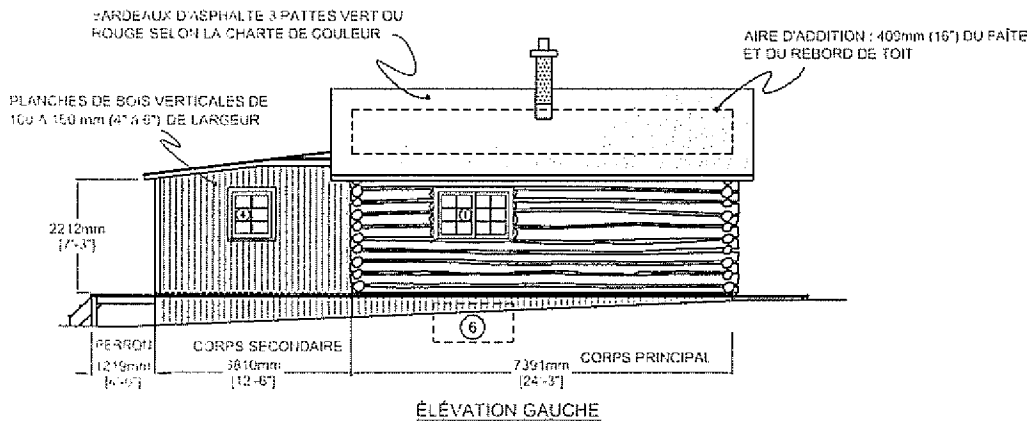
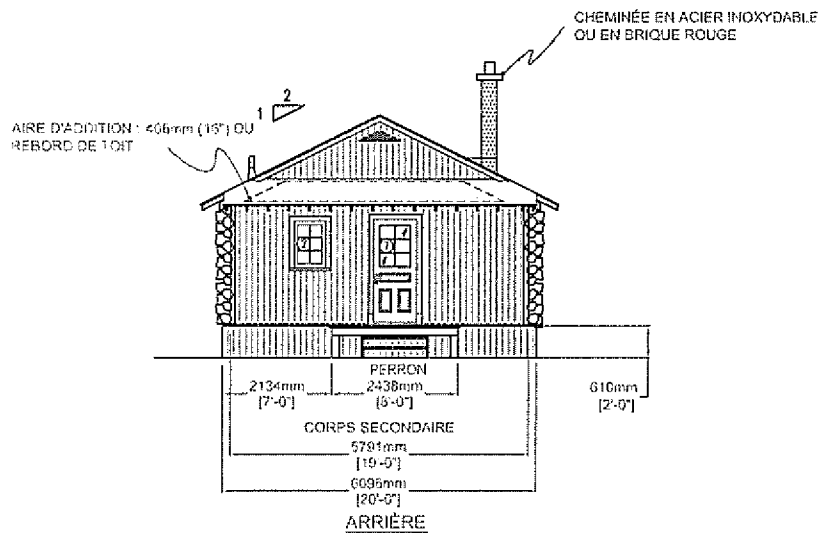
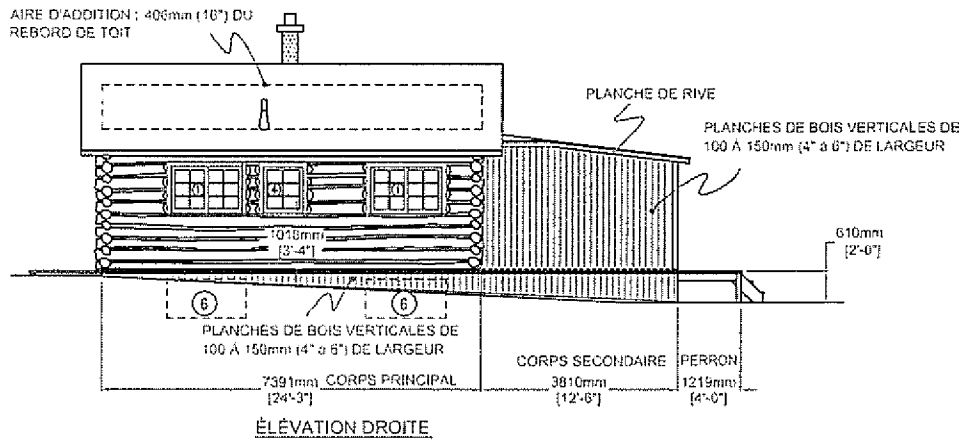
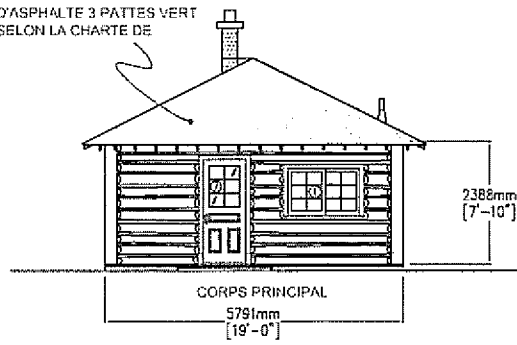


PLANCHE 5

MAISON TYPE D

BARDEAUX D'ASPHALTE 3 PATTES VERT
OU ROUGE SELON LA CHARTE DE
COULEUR

LES CHIFFRES APPARAISSANT
VIS-A-VIS LES PORTES ET LES
FENÊTRES RÉFÉRENT AUX
DESSINS-TYPES FIGURANT SUR LA
PLANCHE 10

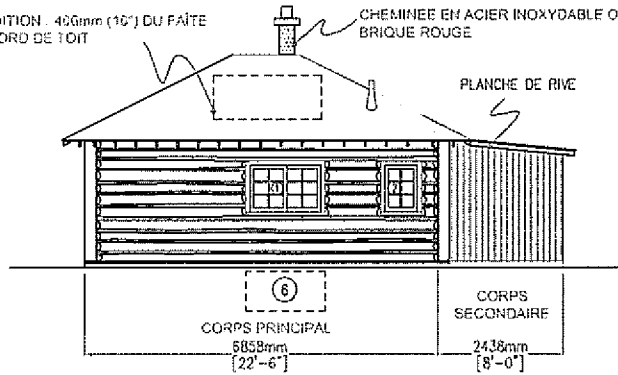


FAÇADE

AIRE D'ADDITION . 406mm (16") DU FAÎTE
ET DU REBORD DE TOIT

CHEMINÉE EN ACIER INOXYDABLE OU EN
BRIQUE ROUGE

PLANCHE DE RIVE



ÉLEVATION DROITE

AIRE D'ADDITION . 406mm (16") DU FAÎTE
ET DU REBORD DE TOIT

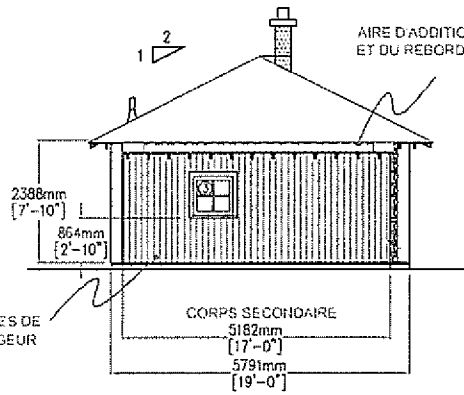
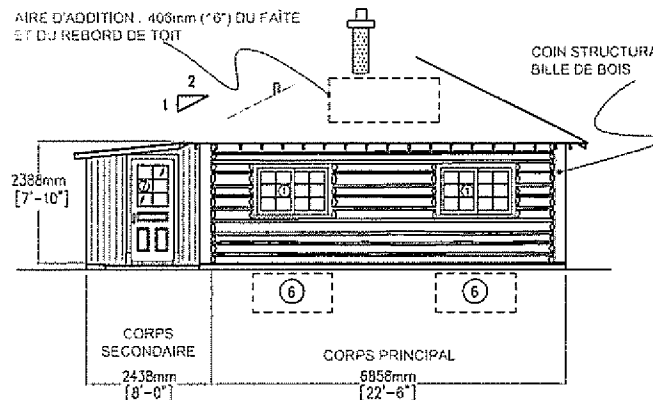


PLANCHE DE BOIS VERTICALES DE
160 À 150 mm (4 à 6") DE LARGEUR

ARRIÈRE

AIRE D'ADDITION . 406mm (16") DU FAÎTE
ET DU REBORD DE TOIT

COIN STRUCTURAL EN 2" X 10" ET 1/2 DE
BILLE DE BOIS



ÉLEVATION GAUCHE

PLANCHE 6
MAISON TYPE D'
inversé

LES CHIFFRES APPARAISSANT
 VIS-À-VIS LES PORTES ET LES
 FENÊTRES RÉFÈRENT AUX
 DESSINS-TYPES FIGURANT SUR LA
 PLANCHE 10

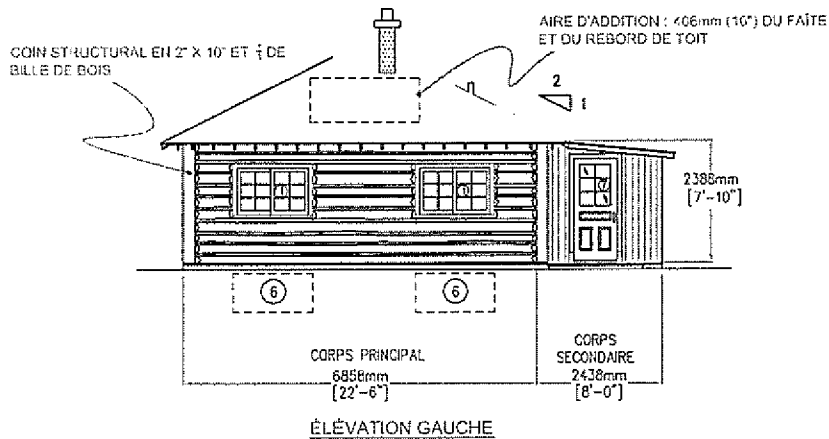
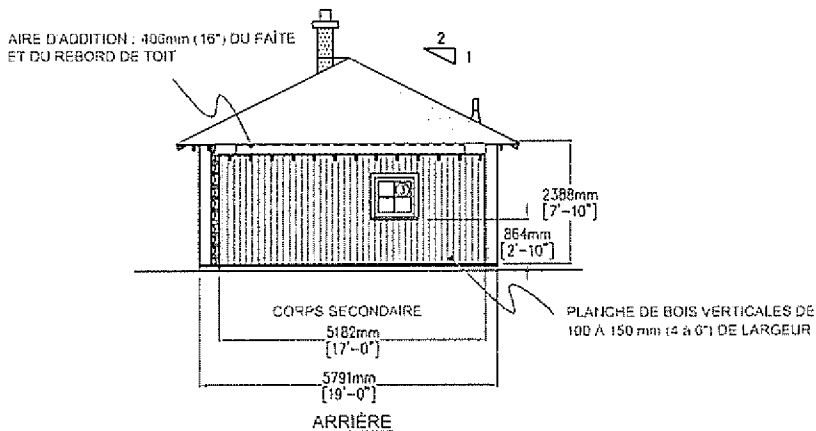
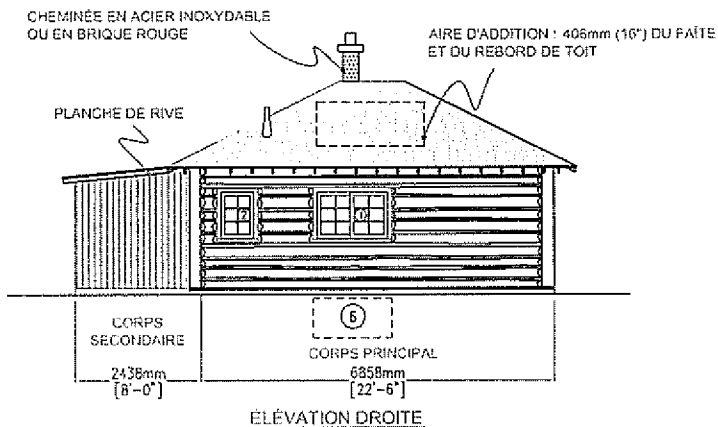
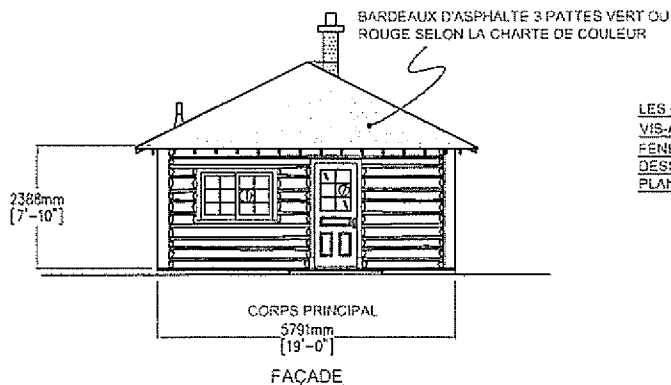
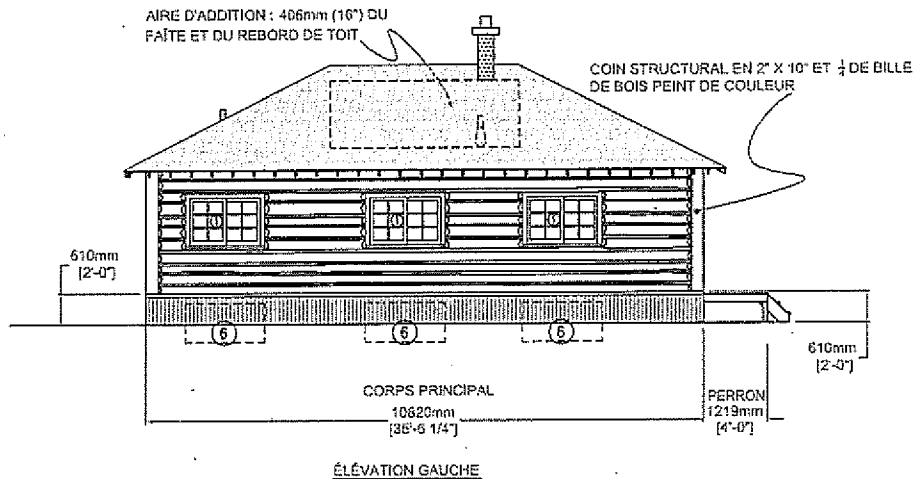
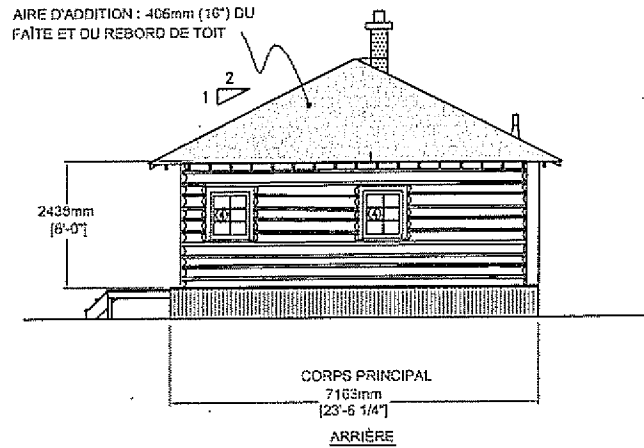
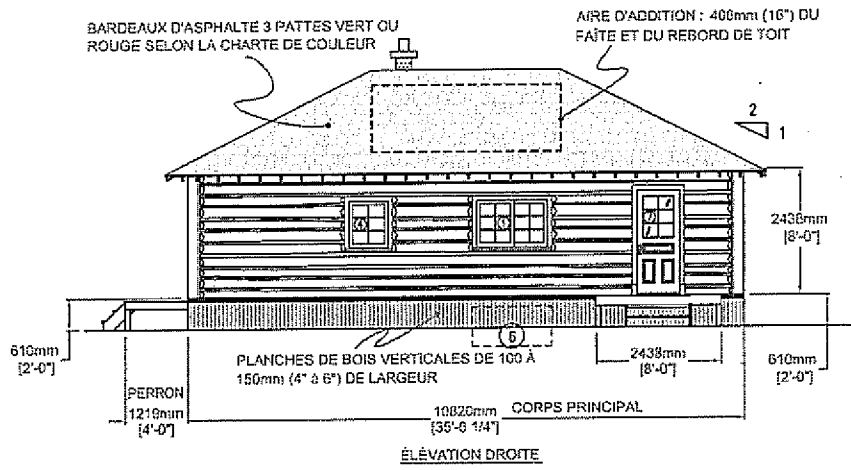
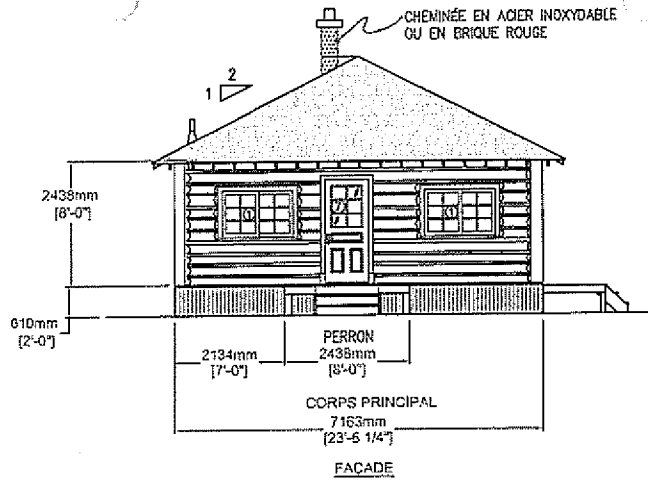


PLANCHE 7
MAISON TYPE E

LES CHIFFRES APPARAISSANT VIS-À-VIS
 LES PORTES ET LES FENÊTRES, RÉFÉRENT
 AUX DESSINS-TYPES FIGURANT SUR LA
 PLANCHE 10.

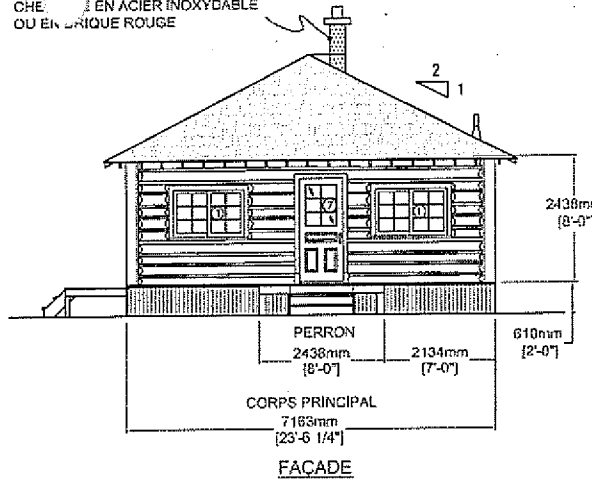


CHEMINÉE EN ACIER INOXYDABLE
OU EN LIÈGE ROUGE

PLANCHE 8

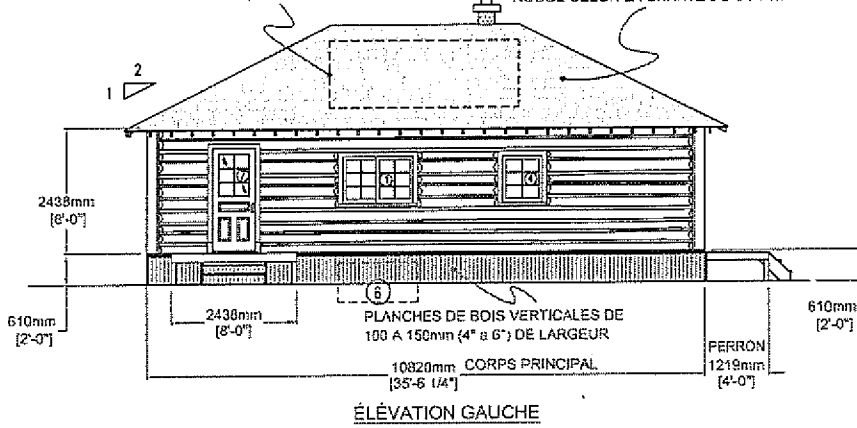
MAISON TYPE E'
Inversé

LES CHIFFRES APPARAISSANT
VIS-À-VIS LES PORTES ET LES
FENÊTRES RÉFÈRENT AUX
DESSINS-TYPES FIGURANT SUR LA
PLANCHE 10

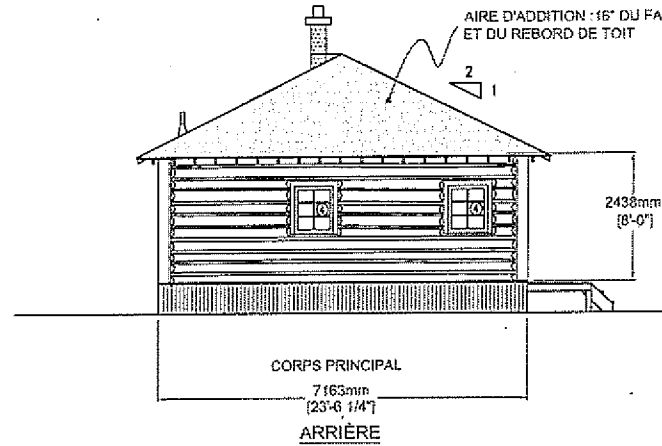


AIRE D'ADDITION : 406mm (16") DU
FAÎTE ET DU REBORD DE TOIT

BARDEAUX D'ASPHALTE 3 PATTES VERT OU
ROUGE SELON LA CHARTE DE COULEUR

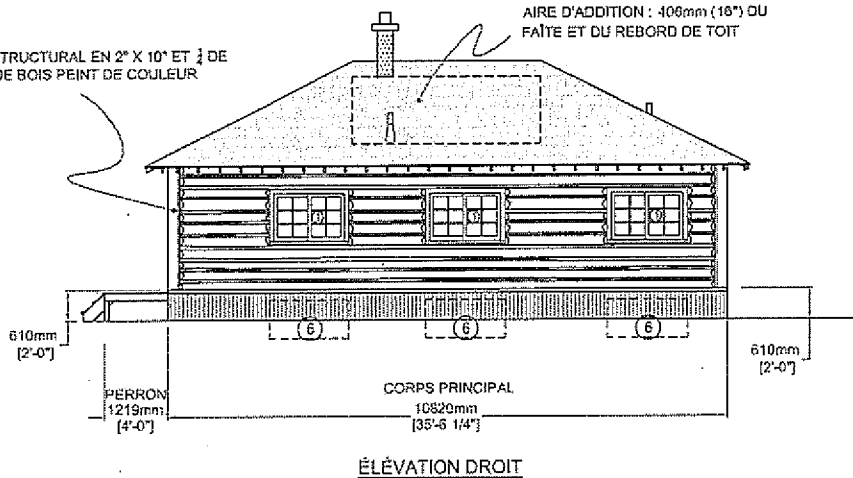


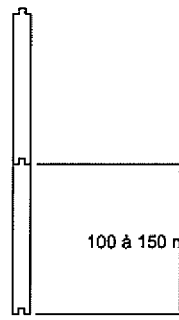
AIRE D'ADDITION : 16" DU FAÎTE
ET DU REBORD DE TOIT



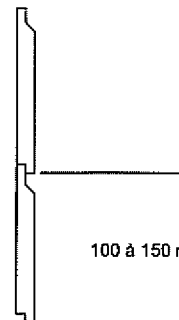
COIN STRUCTURAL EN 2" X 10" ET 1/2 DE
BILLE DE BOIS PEINT DE COULEUR

AIRE D'ADDITION : 406mm (16") DU
FAÎTE ET DU REBORD DE TOIT



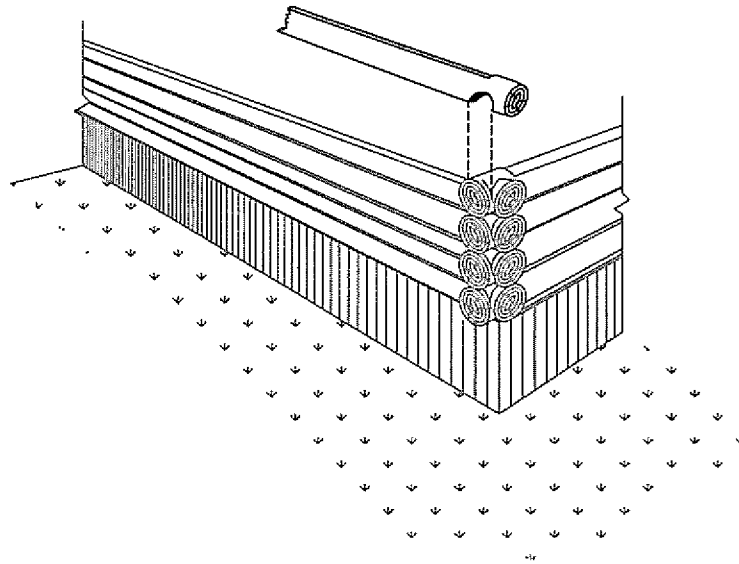


Bord à bord (9a)

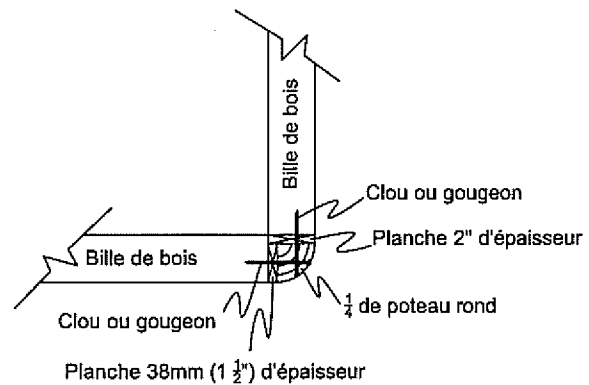
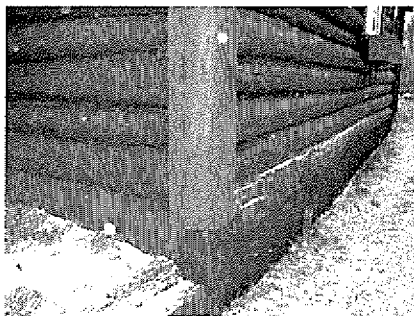


Biaise (9b)

BOUVETAGE

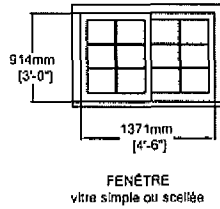
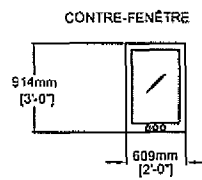
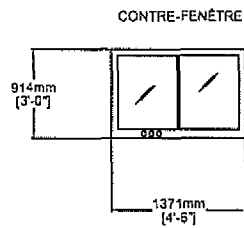


ASSEMBLAGE À MIS-BOIS (9c)



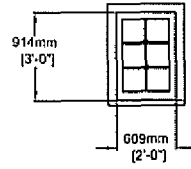
ASSEMBLAGE À QUART DE BILLE VERTICALE (9d)

PLANCHE 10
PORTES ET FENÊTRES



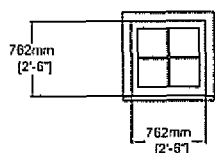
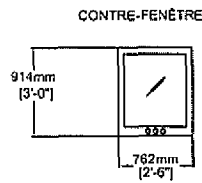
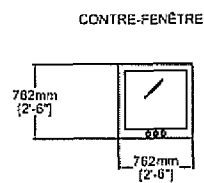
FENÊTRE
vitre simple ou scellée

①



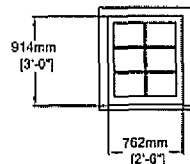
FENÊTRE
vitre simple ou scellée

②



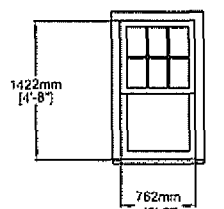
FENÊTRE
vitre simple ou scellée

③



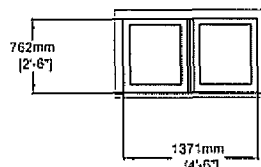
FENÊTRE
vitre simple ou scellée

④



FENÊTRE
vitre simple ou scellée

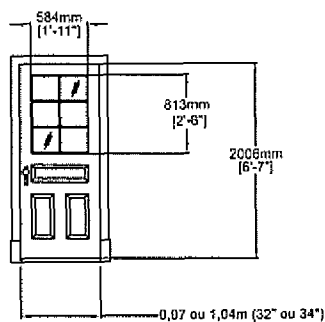
⑤



FENÊTRE
vitre scellée

⑥

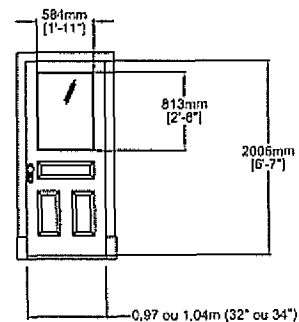
FENÊTRE DE SOUS-SOL



⑦

CONTRE-PORTE EN BOIS
Vitre ou moustiquaire

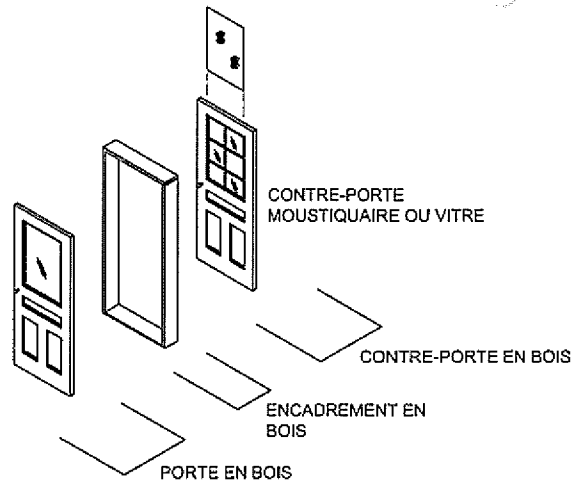
DIMENSIONS
APPROXIMATIVES



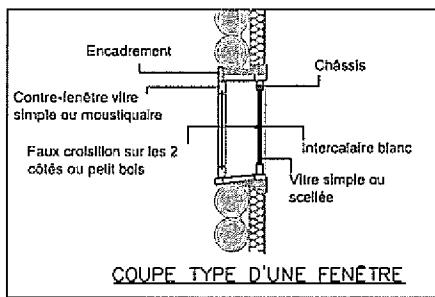
⑧

PORTE EN BOIS
Vitre simple ou scellée

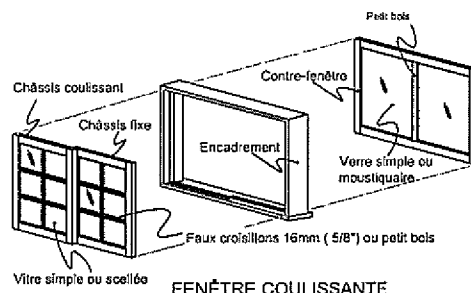
DIMENSIONS
APPROXIMATIVES



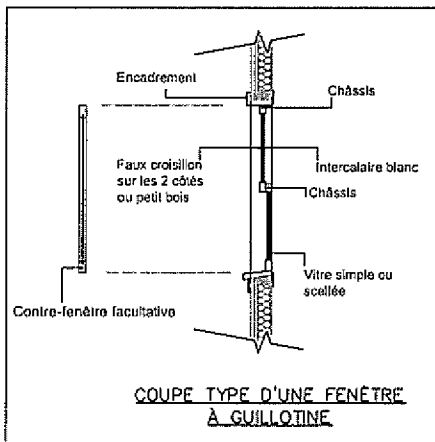
PORTE ET CONTRE-PORTE EN BOIS
VUE DE L'INTÉRIEUR



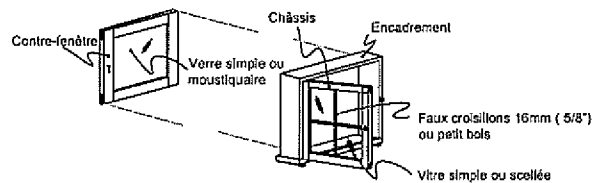
COUPE TYPE D'UNE FENÊTRE



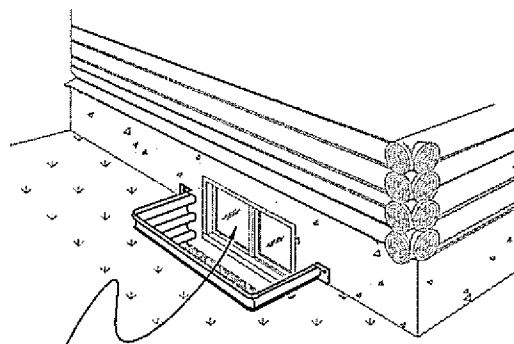
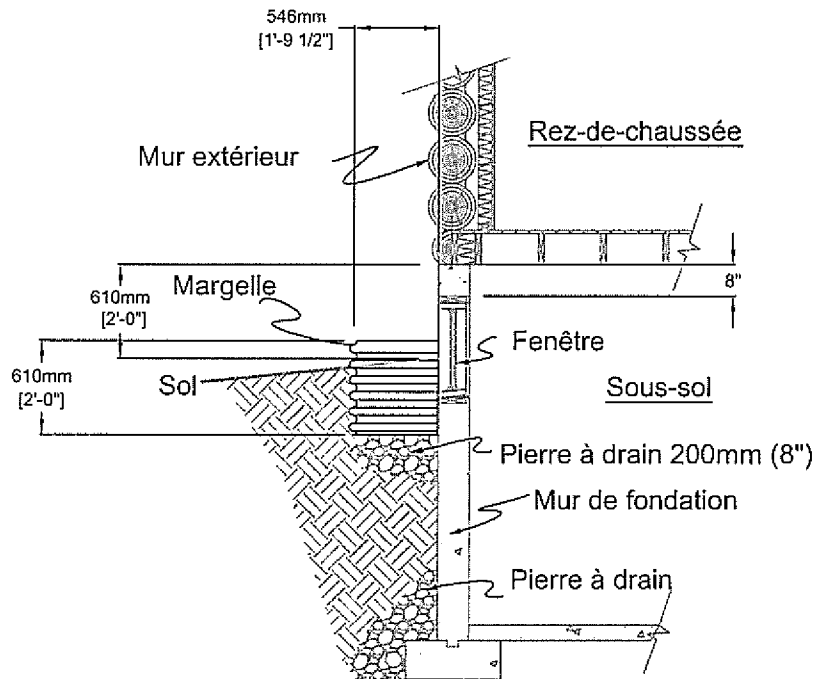
FENÊTRE COULISSANTE
VUE DE L'INTÉRIEUR



COUPE TYPE D'UNE FENÊTRE À GUILLOTINE



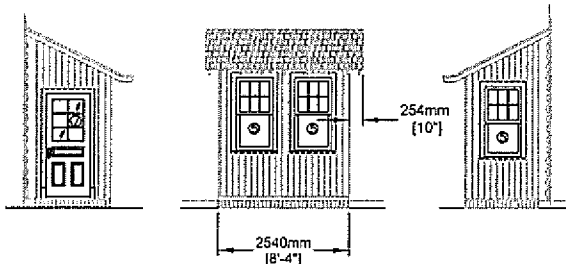
FENÊTRE À BATTANT
VUE DE L'INTÉRIEUR



La superficie d'ouverture minimale doit être conforme au Code de construction du Québec

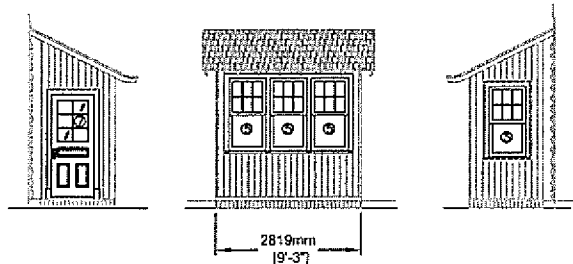
MARGELLE

PLANCHE 13
PORTIQUE, ABRI ET PERRON



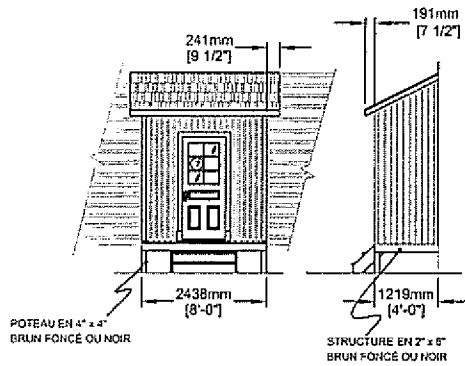
2 FENÊTRES

PORTIQUE, MAISON TYPE "A" (13A)

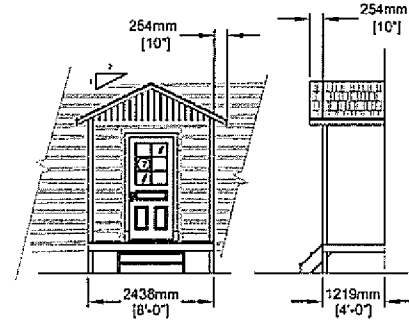


3 FENÊTRES

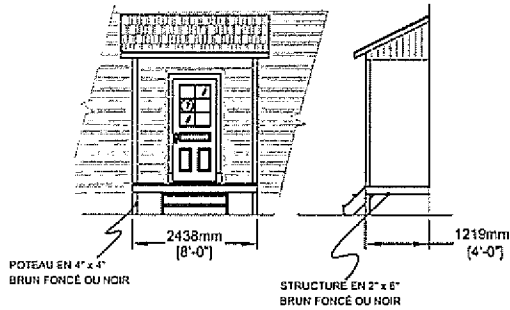
PORTIQUE, MAISON TYPE "A" (13B)



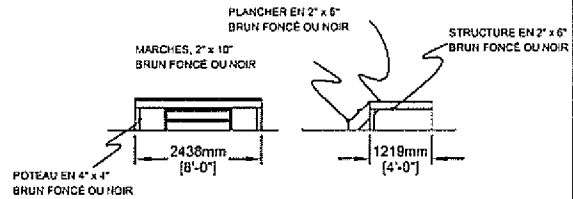
ABRI FERMÉ (13c)



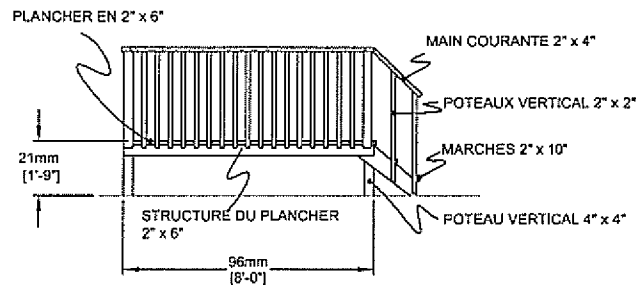
ABRI OUVERT, toit double versant (13D)



ABRI OUVERT, toit simple versant (13E)

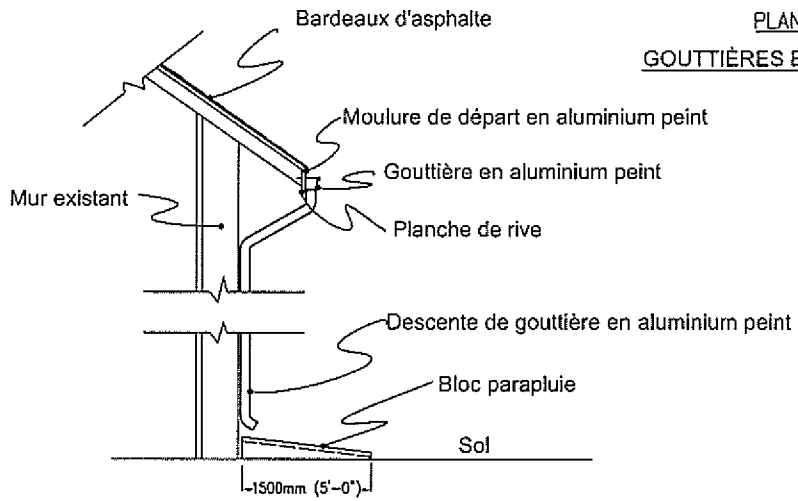


PERRON (13F)

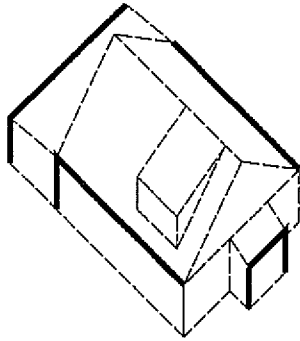


COULEUR DU BOIS : BRUN FONCÉ OU NOIR

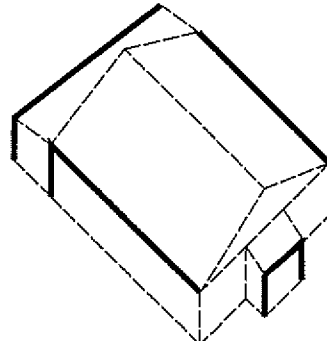
GARDE-CORPS TYPE EN BOIS (13G)



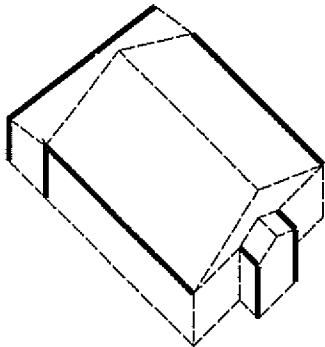
GOUTTIÈRE TYPE (14A)



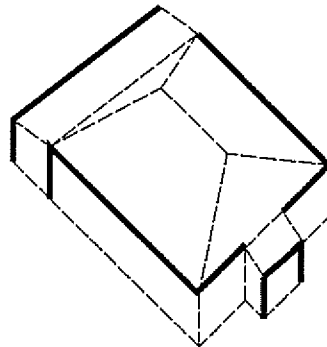
(1)



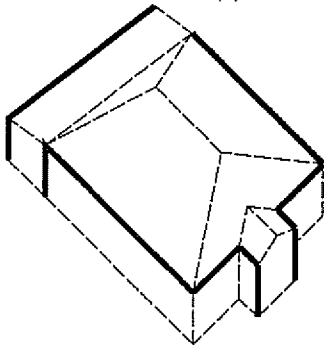
(2)



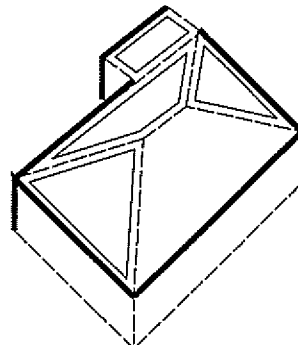
(3)



(4)



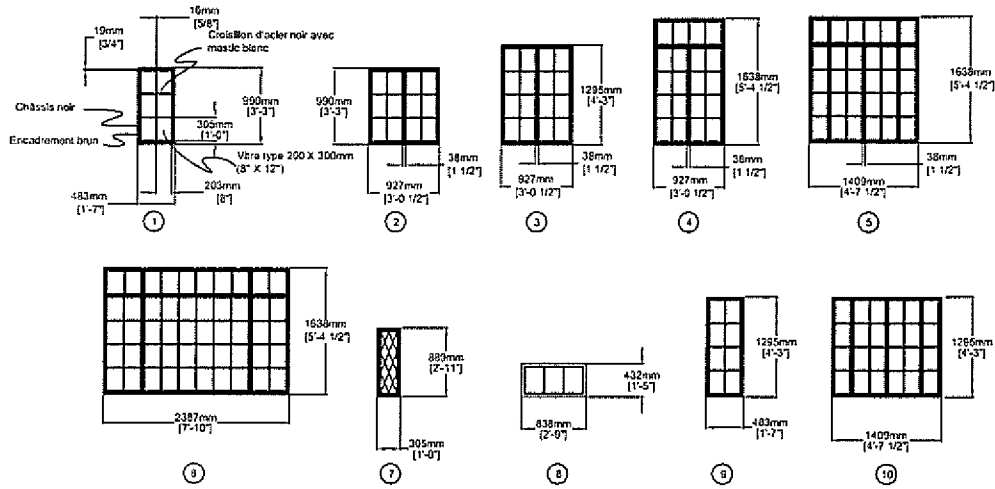
(5)



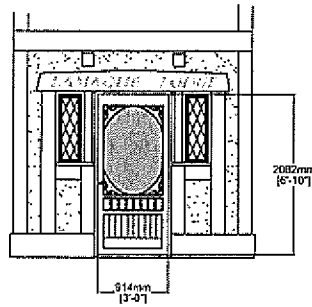
(6)

EMPLACEMENT DES GOUTTIÈRES ET DES DESCENTES (14B)

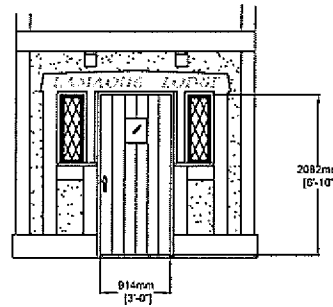
PLANCHE 15
PORTES ET FENÊTRES
119, PERRY



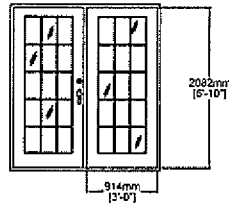
(15A)



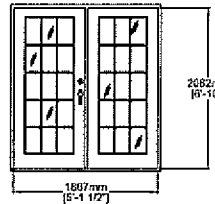
CONTRE-PORTE EN BOIS
Entrée principale



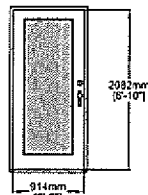
PORTE EN BOIS
Entrée principale



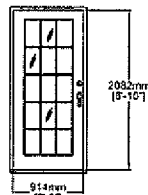
CONTRE-PORTE EN BOIS
Entrée Ouest du balcon



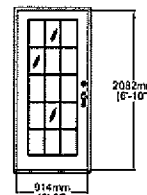
PORTE EN BOIS
Entrée Ouest du balcon



CONTRE-PORTE EN BOIS
Entrée Est du balcon

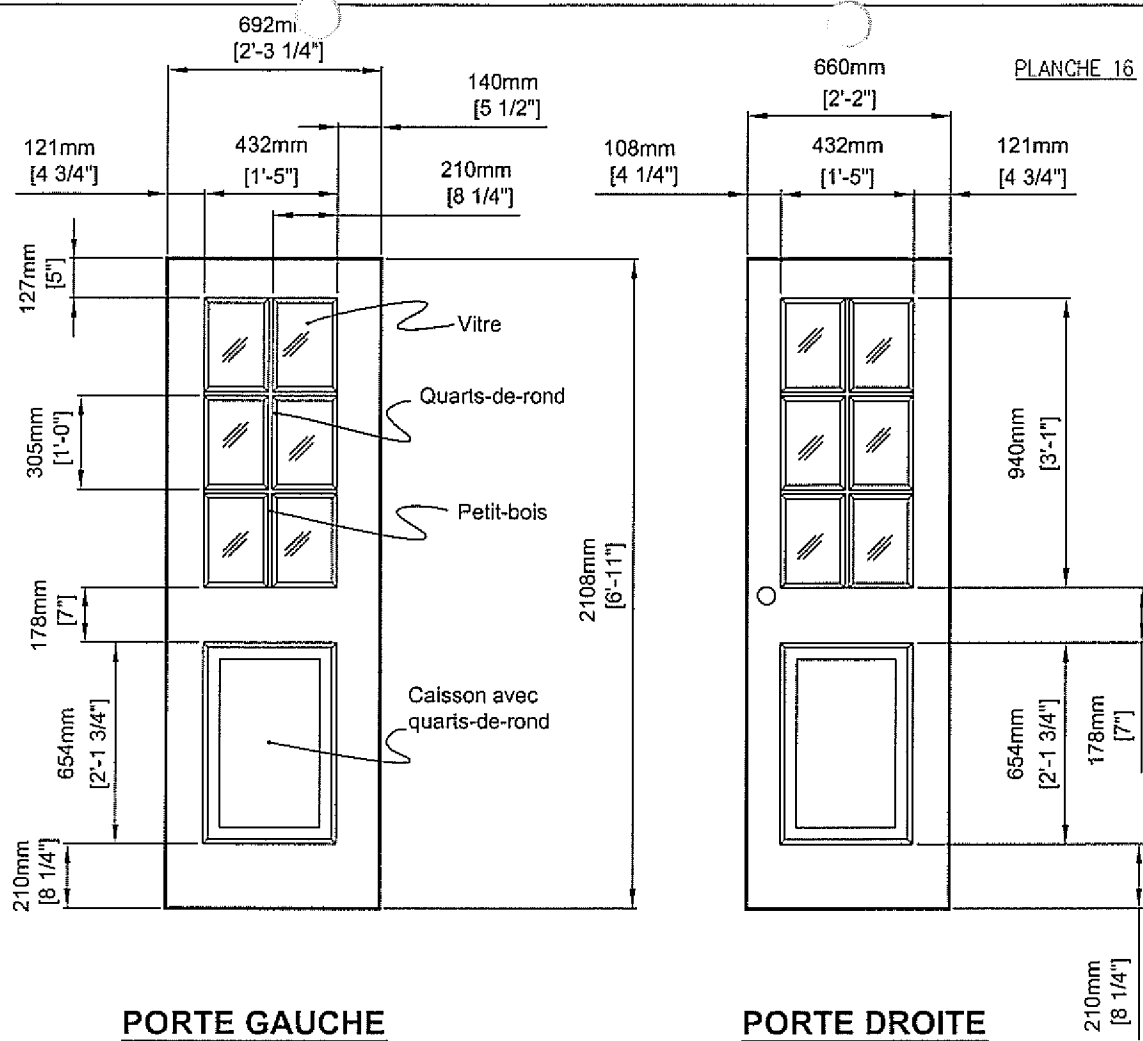


PORTE EN BOIS
Entrée Est du balcon



PORTE EN BOIS
Entrée Est du balcon

(15B)

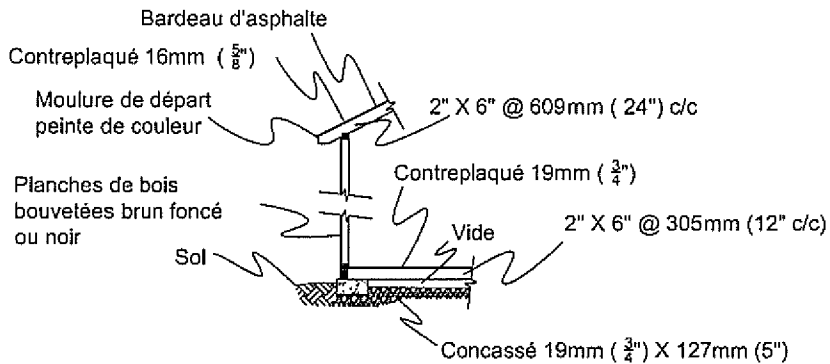
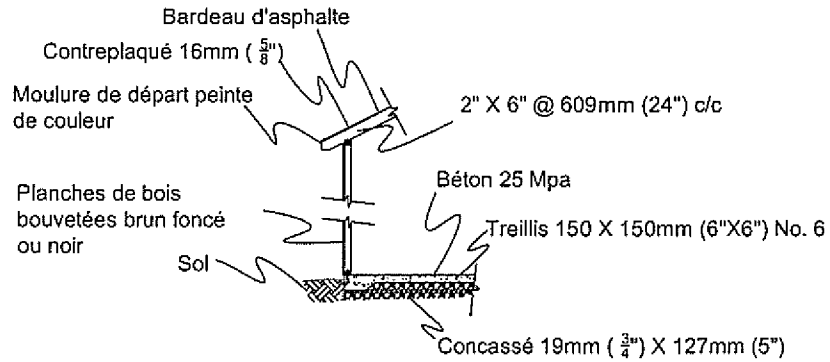
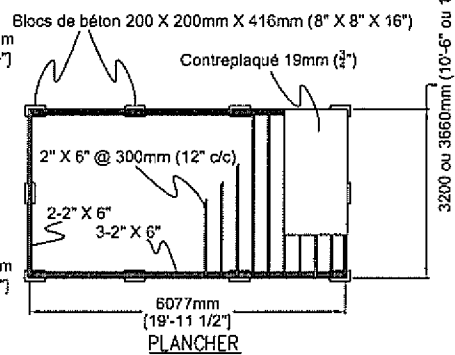
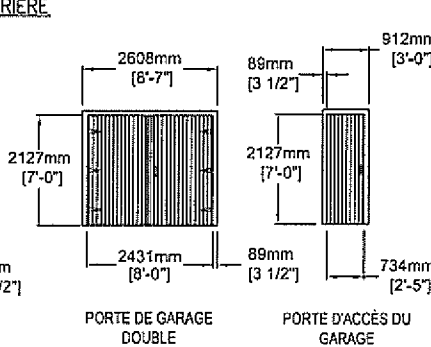
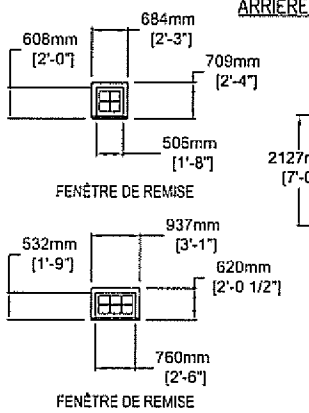
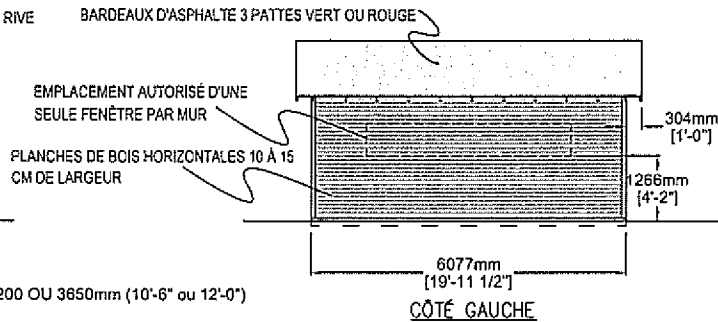
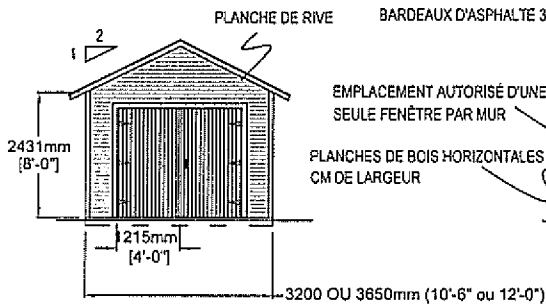
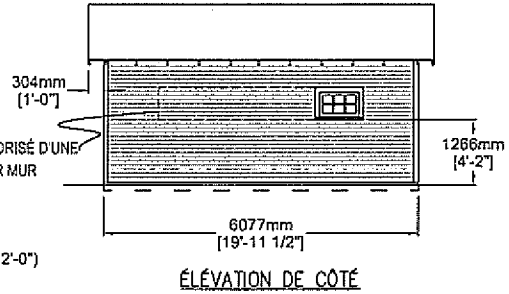
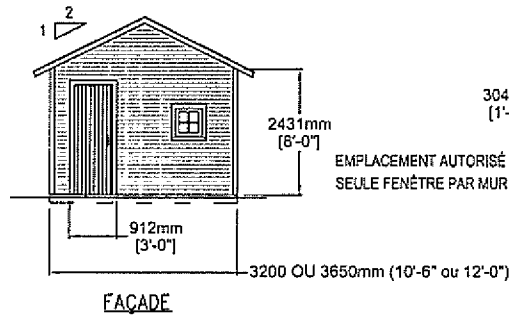


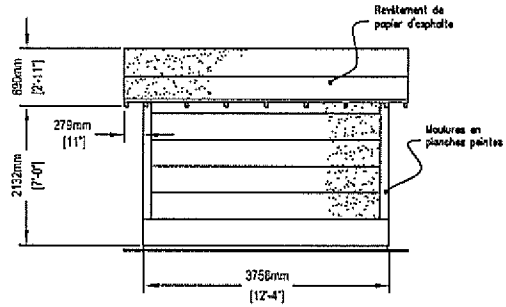
NOTES:

- Porte en bois d'une épaisseur de 44mm (1 3/4")
- Petit-bois à carreaux dans les fenêtres 12mm (1/2")
- Quart de rond pour retenir la vitre 20mm (5/8")
- Vitre pour chaque carreau 20.9 X 305mm (8 1/4" X 12")
- Fenêtre 430 X 940mm (17" X 37")
- Caisson sous la fenêtre 430 X 654mm (17" X 25 3/4") de haut avec quarts-de-rond 20mm (5/8")

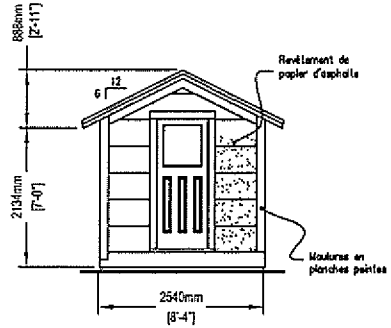
PORTES JUMELLES AU 107, RUE PERRY

PLANCHE 17
GARAGE TYPE

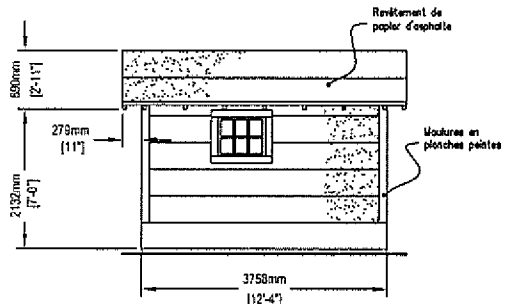




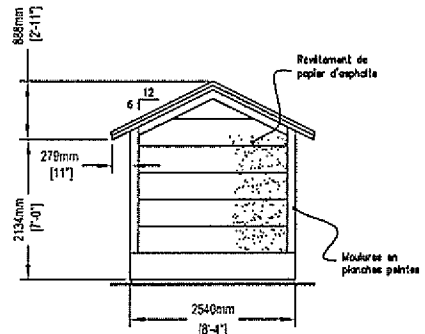
Élévation gauche



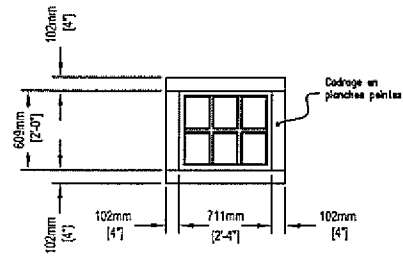
Élévation principale



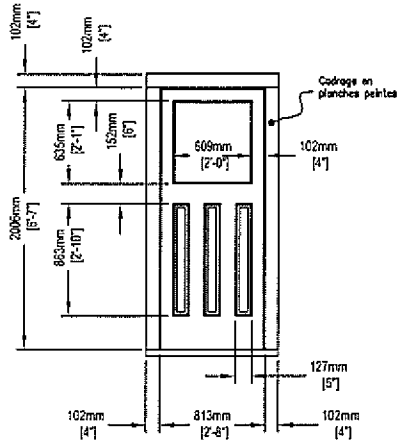
Élévation droite



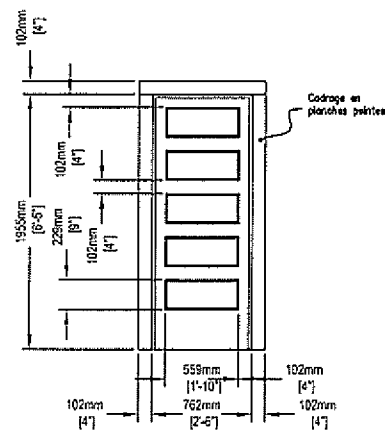
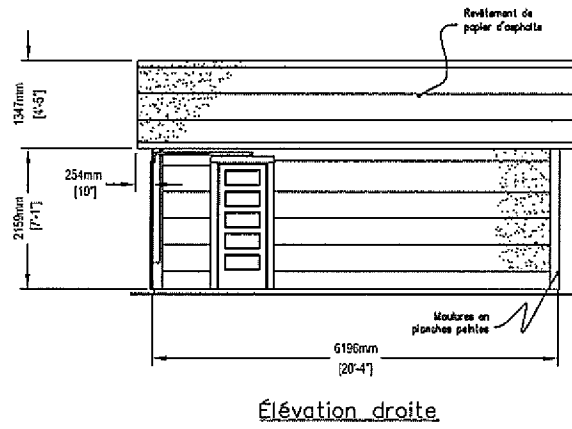
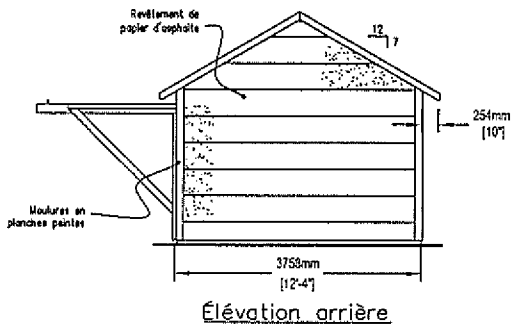
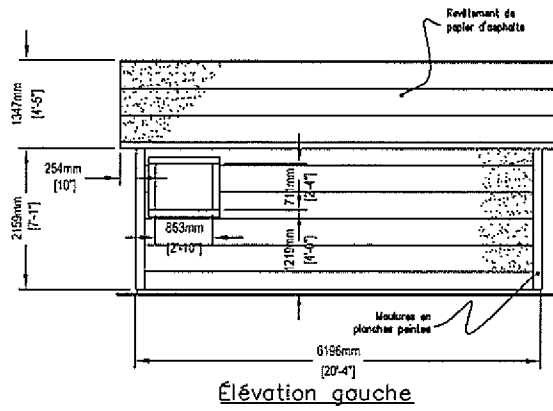
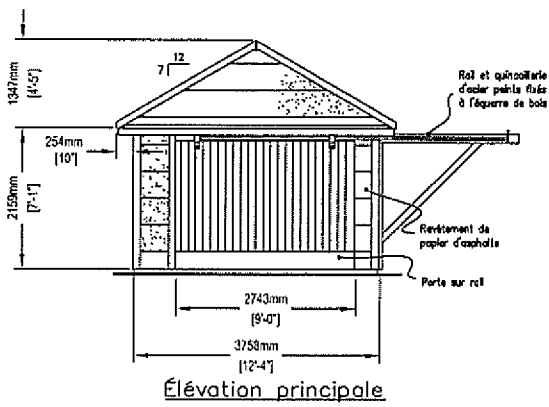
Élévation arrière

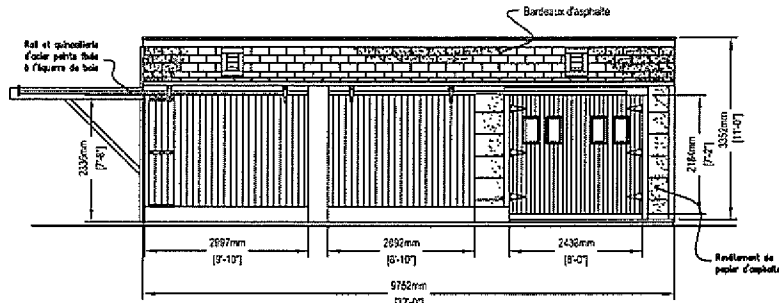


Fenêtre latérale

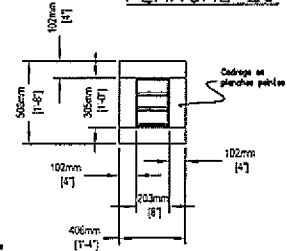


Porte avant

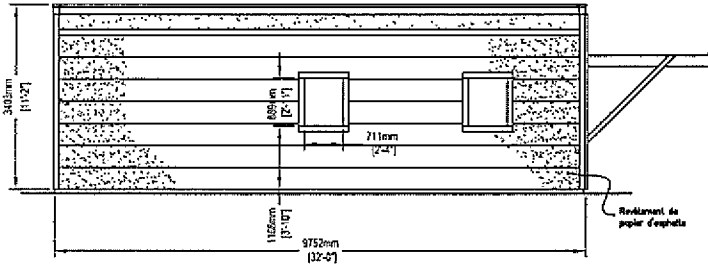




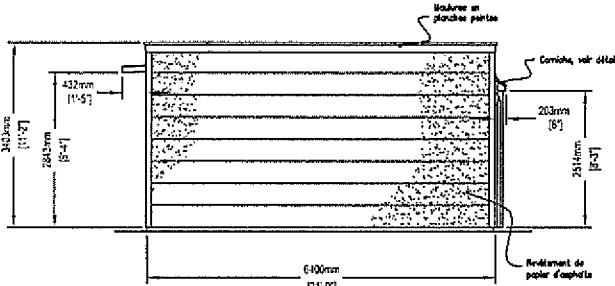
Élévation principale



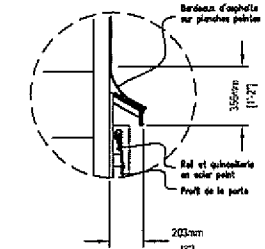
Persienne



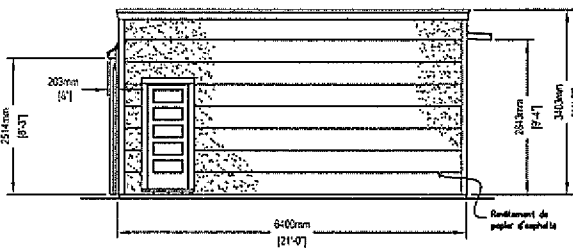
Élévation arrière



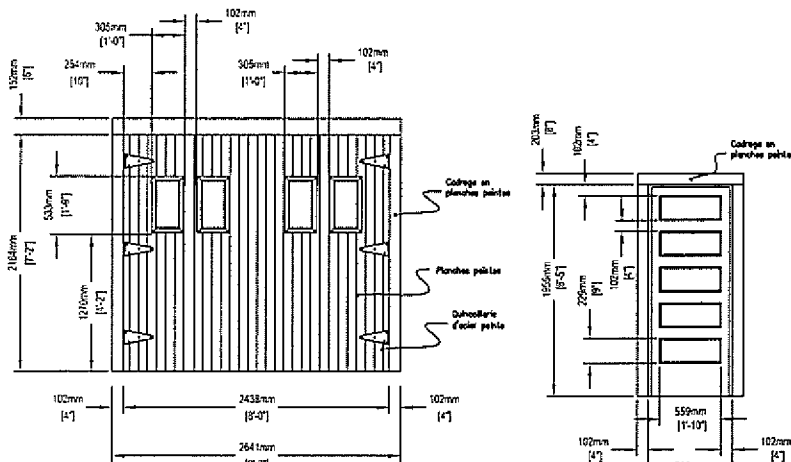
Élévation gauche



Corniche - vue en coupe

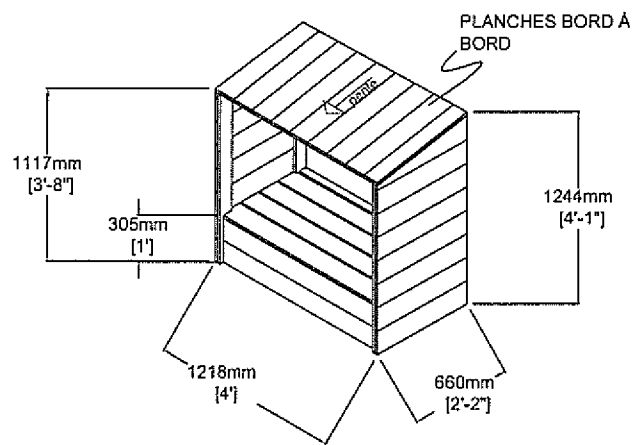
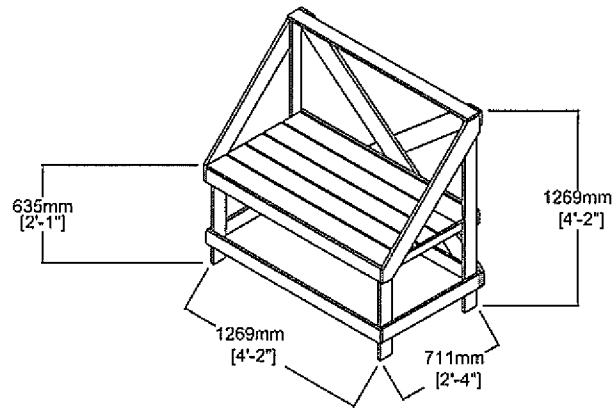


Élévation droite

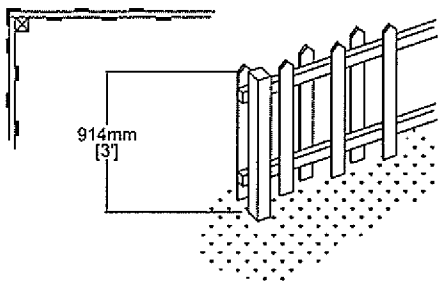


Portes battantes

Porte latérale



SUPPORT À POUBELLE (21a)



CLÔTURE TYPE (21b)

